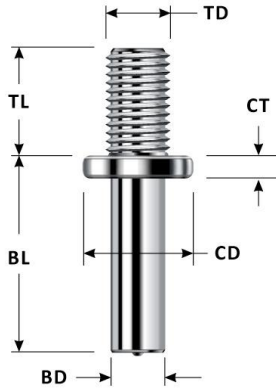


## Collar



Thread "TD"	Base Diameter "BD"	Minimum Length "TL"	Min. Base Length* "BL"	Collar Diameter "CD"	Collar Thickness "CT"	Est. Burn* Off
1/4-20	.215	.500	.500	.500	.093	.125
5/16-18	.275	.500	.500	.562	.093	.125
3/8-16	.330	.500	.500	.625	.109	.125
1/2-13	.446	.500	.593	.750	.140	.125

\* Approximate values  
 Other sizes available  
 Contact us if you have a special requirement

### Material:

	Low Carbon Steel	Stainless Steel
<b>Material:</b>	ASTM A108 C1010-C1020 C-0.23% max; P-0.04% max MN-0.90% max; S-0.05% max	ASTM A276 302HQ/304/304L STANDARD 18-8
<b>Mechanical Properties:</b>	Min. Tensile Type A .....61,000 psi (420 Mpa) Min. Yield Type A .....49,000 psi (340 MPa) Min. Tensile Type B .....65,000 psi (450 MPa) Min. Yield Type B .....51,000 psi (340 MPa)	Other Grades Available Upon Request
<b>Plating:</b>	Available As Special Request	Plating Does Not Apply To Stainless Steel
<b>Annealing:</b>		Studs Are Annealed Where Required